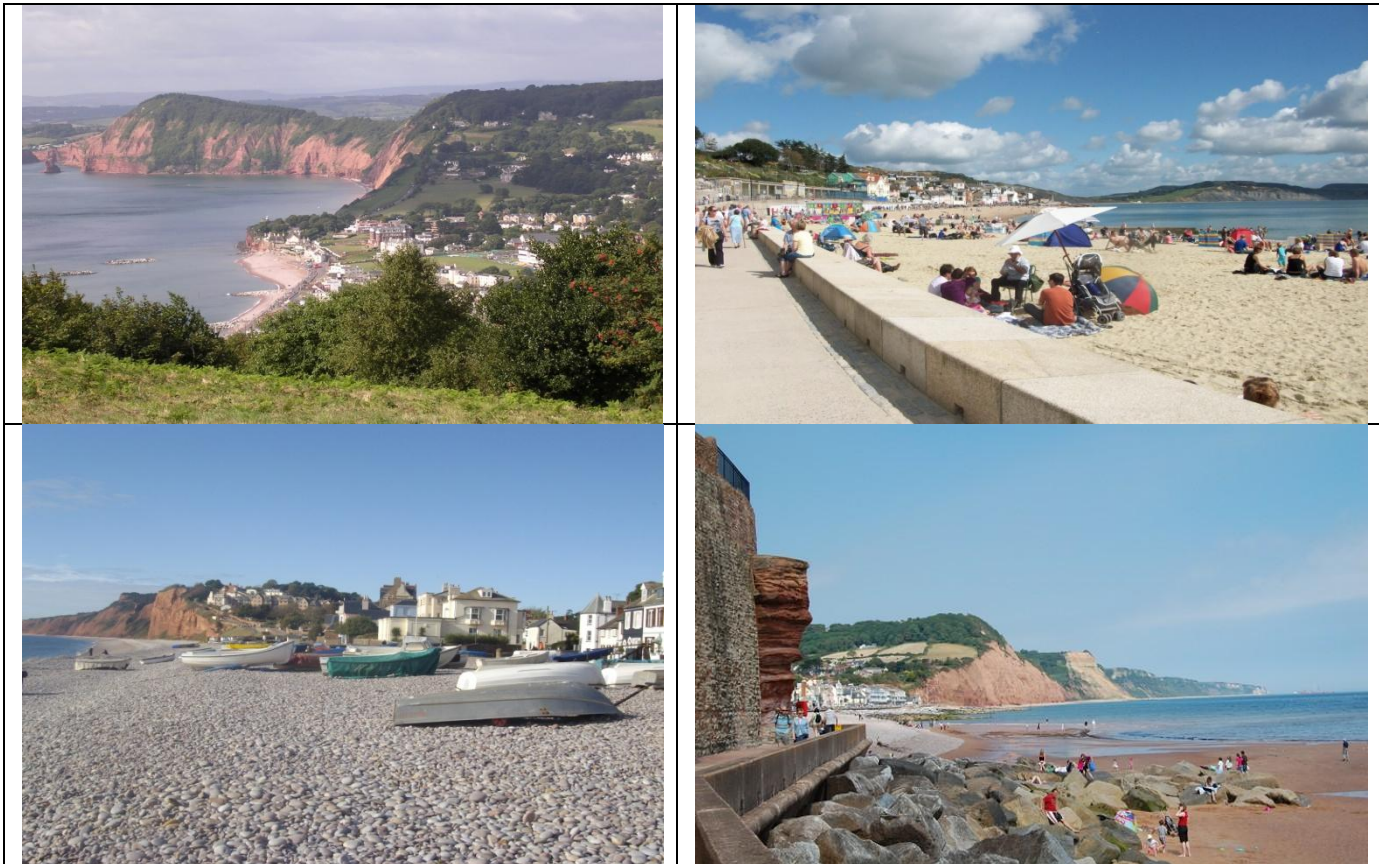




Stoneleigh Holiday Village

... welcome to the Jurassic Coast.



With fine beaches and breathtaking scenery, Stoneleigh makes the ideal place for a great week away. At Stoneleigh you are located on a network of coastal footpaths taking you to secluded beaches and pretty villages. The famous Donkey Sanctuary is next door, and the unique Regency town of Sidmouth with many independent shops and restaurants is less than 10 minutes by car.

All of the bungalows for holiday rental are privately owned, which is why the prices are so affordable. Lots of people come back each year to enjoy a stay at Stoneleigh. Please do not hesitate to ring or email any of the owners listed in this brochure, as they will be only too happy to give you any further information you require.

For the latest offers, please visit www.Stoneleigh-Holiday-Park.co.uk



Wagtails
2 Bed Bungalow with sea view

A comfortable and well furnished 2 bedroom (a double and a twin) bungalow with wonderful uninterrupted sea views. Lounge/diner with kitchenette, patio doors lead to terraced area for sitting out with table and chairs overlooking fields and wooded valley leading to the sea.
*** LOVELY SEA VIEW ***

Bathroom with bath and over bath shower, washbasin and WC.
Lounge/diner-flat screen TV with freeview and inbuilt DVD plus radio.

Kitchenette-sink unit, cooker, fridge/ice box and microwave.
Electricity by £1 coin meter. Electric heaters in each room.

Bed linen is available for hire: Double bed £10, single £7. Parking is located at the rear of the accommodation.

Short breaks are available please contact the owner :

Email john@chaddesley.wanadoo.co.uk or Tel 01935 814917 01935 814917

Excellent positioned bungalow with wonderful uninterrupted countryside and sea views, set centrally in a block of 5 bungalows. Ideal holiday location between the popular resorts of Seaton and Sidmouth with Lyme Regis and its amenities close by. Wonderful cliff top walks giving breathtaking views along the Jurassic coast, 20 minute walk down to the secluded pebble beach at Weston Mouth and easy access by car to the beaches at Sidmouth, Seaton and Branscombe. Fall in love with the donkeys at the Donkey Sanctuary next door, walk with Llamas or simply enjoy eating fresh fish, lobster, crab etc delivered daily to the Market Hall, Sidmouth.

To make a reservation for Wagtails please contact the owner directly, or [click here](#) to perform a search by week.





Stonechat
2 Bed bungalow

Stonechat is a comfortable semi-detached two bedroomed bungalow (sleeps 4) with patio door opening onto an open lawned area with a picnic table. Sea view from side window. Well behaved pets are welcome.

3* VisitBritain Award
No smoking in the bungalow please.

The bungalow which is approached by a sloping pathway from the car park area is double-glazed and has been furnished throughout with care and attention to detail. One bedroom has a double bed and the second has two twin beds, both rooms are fully carpeted. The open plan living/dining/kitchen area has large sofa bed and chair with a foldaway dining table and chairs. Carpets fitted in living and dining area, cushion flooring in kitchen area through to bathroom. The kitchen is fully equipped with electric cooker, refrigerator with ice box, microwave oven and sink. Cooking utensils all supplied.
Bedroom 1: Double.
Bedroom 2: Twin.
Bathroom: Bath, Over-bath Electric Shower, Basin, W.C, Heated Towel Rail.

FACILITIES: Freeview Digital TV/DVD, Radio/Cassette. Electricity by coin meter. Electric Heaters in all rooms. Parking on site near bungalow.
Bed linen and Towels available for hire if required.
Pets Welcome (except Summer School Holidays).

Please contact owners :-
Roger and Lyn Aston on 0121 684 2435 0121 684 2435 or 07711 732120 07711 732120

Email roglyn32@hotmail.com
Please put Stonechat in the subject line.

To make a reservation for Stonechat please contact the owner directly, or [click here](#) to perform a search by week.





'19' CombeView
2 Bed Bungalow with sea view

South facing with fantastic views of the sea across Weston Combe. Opens onto a large grass area making it ideal for children. Family owned, drop us an e-mail at any time for more details.

Great location for walking or exploring Devon.

Two bedrooms. Suitable for families or 4 adults.

- * OPENS ONTO A LARGE GRASS AREA *
- * LOVELY SEA VIEW *
- * NO SMOKING, NO PETS *
- * BED LINEN INCLUDED *
- * CORNER PLOT *

South facing with fantastic views of the sea across Weston Combe. Two comfortably sized bedrooms sleep a small family or 4 adults. One bedroom is furnished with a king-size divan, the second has two single divans (linen provided). The separate kitchen (fitted 2010) includes a full size cooker, fridge and microwave. The lounge/dining area provides peaceful sea views but is also equipped with freeview TV and DVD should the weather not be at its best! Convector heating. Full bath and shower (refurbished 2011). Electricity by £1 coin meter.

Combeview is in an excellent location for families and walkers. The Donkey Sanctuary within a few minutes walk, the heritage coastline (a more strenuous walk) is little over 1 mile away.

Weston itself is positioned between the regency town of Sidmouth and the beautiful villages of Branscombe and Beer.

Part weeks / weekends by arrangement. Long-term lets in winter period considered. Please contact Kevin at combeview@hotmail.co.uk with any queries. All bookings require at least 14 days notice.

To make a reservation for '19' CombeView please contact the owner directly, or [click here](#) to perform a search by week.





Peppercorns
2 Bedroom Bungalow - Sleeps 4

Peppercorns is a South facing 2 bedroom end of terrace bungalow overlooking a lovely grassed area with its own parking space.

Peppercorns has 2 bedrooms - one with a double bed and another with 2 single beds. Duvets and pillows are provided. Bed linen can be hired at an additional cost. The bathroom has a bath with electric shower over. The living/kitchen area has patio doors and looks out over the grassed area and on a good day you may catch a glimpse of the sea. It has a built in oven, hob, microwave, fridge, all cooking utensils etc. There is a dining table and 4 chairs, a 2 seater sofa and 2 easy chairs. The bedrooms and living room have electric heaters. There is a digital TV/DVD with many freeview channels. Electricity has to be paid for by £1 coins in a meter. A 10% discount is available for a 2 week booking. A £50 deposit is required to secure booking with balance due 4 weeks prior to holiday. The bungalow is available from 4pm on day of arrival and departure is by 10am. To make a booking or for further information please email: :abowden1@talktalk.net or phone: 01392841984

To make a reservation for Peppercorns please contact the owner directly, or [click here](#) to perform a search by week.





Weston Lodge
Semi-detached bungalow

A 2 bed end of terrace bungalow. Sleeps 4. Picnic table in lovely gardens to front (south facing). Set in spacious grounds. Close parking. TV / Freeview / HiFi. SORRY NO PETS.

The comfortably furnished bungalow has the benefits of two bedrooms, a lounge/diner and separate bathroom with bath and electric shower. The patio doors open out onto a well maintained site with views down to the sea. The lounge which has a colour TV with Freeview and Hi-Fi, creates a cosy atmosphere for autumn breaks and an oasis during the summer months. The Kitchen is compact but perfect at the end of the day boasting a Cooker, Fridge (with Freezer Compartment), Microwave Oven, Kettle and Toaster. There are two bedrooms, one with a double bed and the other with a Bunk Bed. Sleeps 4. Outside there is a picnic table and access to the communal grounds. There is also parking for numerous cars in the shared car-parks. SORRY - NO PETS.

For bookings and details contact: doug.follett@hotmail.com

To make a reservation for Weston Lodge please contact the owner directly, or [click here](#) to perform a search by week.





Bray Cottage
2 bedroom end of terrace bungalow

A well presented and 'colourful' bungalow. Situated in a quiet and picturesque location in the holiday park. Disabled friendly throughout.

Kitchen area - fully equipped, with cooker, microwave and fridge.

Living room - dining table (5 chairs), large futon, television (with freeview), video player (with large range of videos), CD player and radio.

Bedroom 1 - double bed, wardrobe (with hangers), two bedside cabinets and chest of drawers (with hairdryer provided).

Bedroom 2 - two single beds, wardrobe (with hangers) and chests of drawers. Iron and ironing board.

Bathroom - fully accessible 'wet room' with grab rails and shower seat. Disabled friendly with entrance ramp and grab rails. All bedding is provided. Less than a mile from the beach and 10 minutes drive from the seaside town Sidmouth.

Contact Claire Wood - 01392 201983 01392 201983

To make a reservation for Bray Cottage please contact the owner directly, or [click here](#) to perform a search by week.





Birdsong
3 Bed Bungalow

Birdsong holiday bungalow in East Devon (Sleeps 6)

'Birdsong' is a three bedroomed bright, airy, modern bungalow with lovely views of the valley and the sea beyond. Well behaved dogs welcome.

'Birdsong' is a three bedroomed bungalow situated at the end of a terrace with a lovely open view over the valley to the sea. It is newly decorated throughout and includes a well-appointed kitchen and bathroom. It is situated in the village of Weston on the Stoneleigh Leisure Park adjacent to the famous Donkey Sanctuary, perfect for families. The site has an adventure playground and in the neighbouring Donkey sanctuary you will find a great cafe serving very good food and lots of things to keep the youngsters occupied. As the name suggests, 'Birdsong' is also perfect for bird spotters and wildlife enthusiasts.

The accommodation includes bathroom with shower over bath, kitchen / living room with microwave, fridge freezer and integrated halogen cooker, and there are two twin-bedded bedrooms and one double. Patio doors in the living room look out onto a large grassed area with private picnic bench and magnificent views over the valley, to the sea just beyond.

In the living room there is flat screen TV with freeview, a DVD/ video player and CD player and radio. Guests are welcome to use the videos, DVDs and CDs at the property during their stay.

'Birdsong' is available for long weekends off season from as little as £40 per night.

Contact details:

For more information, please contact Lucia Chadwick 01373 831002 01373 831002 or Anne Agius 01392 851545 01392 851545 (m: 07932068054) and/or email chadwick460@btinternet.com or anne.agius@googlemail.com

Other information:

The property is a no smoking bungalow. Pets are allowed if well behaved.

Electricity is metered and payable by the guest by means of a coin slot meter located within the bungalow.

Towels and bedding can be hired (cost are £10 double, £7 single)

A cot is available to hire at no extra cost





Starfish Cottage
2 bed bungalow

End terrace 2 bed bungalow. Sleeps 4 in double and twin bedrooms. Bathroom with bath and electric shower. Fully equipped kitchenette. TV/DVD/Freeview. Electric heating. Patio door to private lawn/gardens with picnic table. Parking adjacent to bungalow. Free WI-FI.

10% DISCOUNT FOR ONLY 2 PERSONS. 10% DISCOUNT FOR 2 WEEK BOOKINGS.
NON-SMOKING. SHORT BREAKS. WELL BEHAVED PET WELCOME.
TEL : Audrey or Phil on 01684 310046 01684 310046

Starfish is a comfortable, well equipped bungalow, with modern furnishing and decoration. Heating is provided by an electric convactor heater in each room. Parking is available adjacent to the bungalow. One well behaved dog is welcome at an extra cost of £25 per week. Discounts available for only 2 persons, and 2 week bookings. In detail, Starfish comprises:-

- Lounge / Diner / Kitchenette with TEAC 22" LCD TV with freeview, and DVD player. Patio doors lead to steps onto a private lawn and picnic table.
- Kitchenette with an electric hob oven, fridge with freezer box and a microwave; all cooking equipment is provided.
- Bathroom has a bath with electric shower, toilet and basin.
- The 2 Bedrooms have one double and 2 single beds.
- Parking is adjacent, with 3 steps to the entrance.
- Linen service available.

Electric is via a £1 pound coin operated meter. Out of the main season short breaks and weekends can be arranged if you contact us on :-

Tel : Audrey or Phil on 01684 310046 01684 310046 or

Email : starfishcottage@btinternet.com





Swallows
2 Bed Terraced bungalow

SWALLOWS

A middle terraced bungalow with two bedrooms, one with double divan, and one with bunks and a cot. Bathroom with bath/shower washbasin and WC. Fully fitted kitchen with cooker, fridge and microwave. Lounge with colour Freeview TV and DVD, VCR and player.
SWALLOWS IS WITHIN AN HOUR'S DRIVE OF THE OLYMPIC SAILING BASE AT WEYMOUTH.

* SLEEPS 4 + BABY *

* NO SMOKING *

* SMALL DOGS PERMITTED BY PRIOR ARRANGEMENT *

Small lounge / diner / kitchenette. Very well equipped kitchen with comfortably furnished seating area for both dining and relaxing. Highchair and permanent pine cot in children's bedroom. Avent steriliser and children's cutlery/crockery all available.

Bed 1 - double 4'6" double bed, pine furniture.

Bed 2 - 2'6" pine bunk beds and pine cot.

Bathroom - full size bath with new electric shower, washbasin, WC.

We welcome small dogs who bring their own bed and bedding and who don't climb on the furniture! Bed linen can be supplied for an extra charge though you are very welcome to supply your own. Duvets and pillows are always supplied.

To book or for any other enquiries, please contact Jane on e.jane.harding@hotmail.co.uk

To make a reservation for Swallows please contact the owner directly, or [click here](#) to perform a search by week.





Cornerstone
Large 3 bed bungalow with sea view

Sleeps 6. One double and two twin bedrooms.
South facing. Stunning location with uninterrupted views to Weston Combe and the sea.
* NO SMOKING *
* ONE DOG WELCOME *
* SEA VIEWS *

Stunning location with uninterrupted views to
Weston Combe and the sea.

3 bedrooms - sleeps 6

Entrance hall

Lounge/diner - south facing overlooking sea and
countryside. TV, Freeview, DVD
player/recorder. Patio door leads to
sitting out area with picnic bench.

Kitchen area - fully equipped, with microwave, cooker, cooker
hood, fridge.

Bedroom 1 - twin, sea view

Bedroom 2 - double, sea view

Bedroom 3 - twin

Bathroom - with bath and over-bath shower

Bed linen is available for hire: Double bed £10, single £7.50 *Heating* is by electric convector and fan
heaters. *Electricity* is via £1 coin meter. *Parking* at rear of bungalow *One dog* welcome, except mid-
July to end of August *Short breaks* available - please phone for details

For further information please contact

Cliff & Val Bond

01275 392148 01275 392148

val@longashton.plus.com





Sandways
2 bed bungalow

Two bedrooms

Sandways is a cosy open plan bungalow, fully equipped for adults and children with two bedrooms. Redecorated inside and out March 2011. Lovely position with patio and open views to the countryside and Donkey Sanctuary. Designated parking at the back of the bungalow.

Sandways is a bungalow that sleeps four, accommodating adults and children comfortably. It is fully double glazed and has been decorated throughout this Spring 2011.

Sandways is situated on the edge of the site with views of the countryside, that looks across to Donkey Sanctuary. The area is ideal for wildlife enthusiasts, as it is in an *Area of Outstanding Natural Beauty*. The bungalow has its own private patio with bench, table and chairs + open lawned area. This is a non smoking property with no pets allowed.

Lounge / Dining area Comfortable open plan living area with sofa, two arm chairs and coffee table. Flat screen TV with Free view , DVD player and radio. Carpeted floor with an electric heater. Double leaf dining table with folding chairs.

Kitchen Fully equipped with an electric cooker, microwave and fridge with an ice box. Vinyl flooring for easy cleaning. Self catering holiday made easy.

Bedroom 1: Double bed, plus wardrobe, chest-of-drawers and bedside drawer units. Travel iron and hair drier.

Bedroom 2: Twin beds, plus wardrobe and bedside drawers. Both rooms are fully carpeted and have electric convector heaters.

Bathroom Electric shower over the bath, wall heater and heated towel rail. Electricity is by £1 coin meter. There is an immersion for hot water. .Bed linen is included in the price but not towels or t.towels.

To book or make enquiries please contact:

Carol Hughes Tel: 07842 521698 07842 521698 Email: carol.jacko@hotmail.co.uk

Or Jean Mercer Tel: 07842 514296 07842 514296 Email: jandtmercerc@gmail.com





Sea Breeze
Large 2 Bed Semi-detached Bungalow - sleeps 5

A larger-sized luxury 2 bed semi-detached bungalow with two large bedrooms, one with king size, and one with twin beds + roller bed.

***** SEE BELOW FOR SPECIAL OFFERS *****

- * ELECTRIC INCLUSIVE *
- * BEDDING & TOWELS INCLUSIVE *
- * ONE SMALL PET ALLOWED *
- * ON SITE FREE WI-FI CONNECTION *
- * 10% DISCOUNT FOR BOOKING TWO WEEKS *
- * OR 10% DISCOUNT FOR 2 PEOPLE (FULL WEEKS) *
- **NO SMOKING**

Large two-bedroom semi-detached holiday bungalow, south facing with distant sea views. Patio with picnic bench and sun chairs. **One well-behaved pet welcome.** *Accommodation consists of: (up to 5 adults)*

Hallway. Large open plan living/dining/kitchen area, with patio doors leading to outdoor sitting/dining area. The kitchen area is very spacious and fully equipped with washing machine & fridge/freezer. The comfortable living area is again very spacious with a dining table for six, two sofas, Flat screen Freeview digital TV/DVD/video, Playstation, Hi-Fi with i-Pod dock. Games box including baby toys also provided.

Bedroom 1 has King size bed. Bedroom 2 has twin beds (plus "roller bed" if required) all with quality mattresses. Both rooms have plenty of wardrobe and drawer space, bed linen provided. Bathroom has bath/electric shower, WC and heated towel rail.

All furnishings are light and modern. Floors are either wood laminate or tiles. All Electric. (inclusive).

PLEASE CONTACT: *Carol will be unavailable between 11 Feb 2012 and 30 April 2012. Please contact Helen only. Thank you.*

Carol Email : barringtonwise@aol.com

Tel : 01604 589811 01604 589811 or 07968 755535 07968 755535
OR

Helen Email: h.irvine@sky.com

Tel: 01933 413467 01933 413467 (evenings only during week)





**Robin's Nest
2 bed Bungalow**

A two-bedroom end of terrace bungalow. Sleeps 6.

- * Electricity included *
- * SHORT BREAKS *
- * Non-Smoking *

10% discount for two week bookings

Robin's Nest is a comfortable, well-equipped, small bungalow, set in Stoneleigh Holiday Park near to Sidmouth.

Living/diner - patio doors with open view. TV with DVD and Freeview. CD player/radio. A good quality double sofa bed.

Kitchen area - fully equipped, with cooker, microwave and large fridge.

Bedroom 1 - five foot double bed (which can be separated into two 2 feet 6 inch) singles, built-in wardrobe and chest of drawers.

Bedroom 2 - two 2 foot 6 inch single beds (which can be made into a five foot double), wardrobe and chests of drawers.

Bathroom - bath with shower over

Electricity is included in the charge. Parking is adjacent to the bungalow. Bed linen is available for hire - double bed £10, single £7. Short breaks are available please phone or email for details.

For further information please contact

Sue Seamour: 01256 419792 01256 419792 or 07765 638948 07765 638948

email: sue.seamour@ntlworld.com

To make a reservation for Robin's Nest please contact the owner directly, or [click here](#) to perform a search by week.



